



WINDOWS & DOORS

**FORGENT® SERIES
OFFSET
JAMB
APPLICATION**

**READ THESE INSTRUCTIONS COMPLETELY BEFORE
STARTING ANY INSTALLATION**

⚠ CAUTION

Lead-based paint may be present in older homes, and the removal of windows & doors may cause this paint to be disturbed. In order to minimize exposure to lead-based paint dust, please consult www.epa.gov/lead for more information.

www.kolbewindows.com

Please read and follow the Installation Instructions completely before installing. If you have any questions about this or any of our products, please call your local Kolbe dealer.

⚠ WARNING

Proper Eye and Hearing Protection must always be worn when installing, removing or performing adjustments to Kolbe window and door products.

ITEMS REQUIRED BY INSTALLER

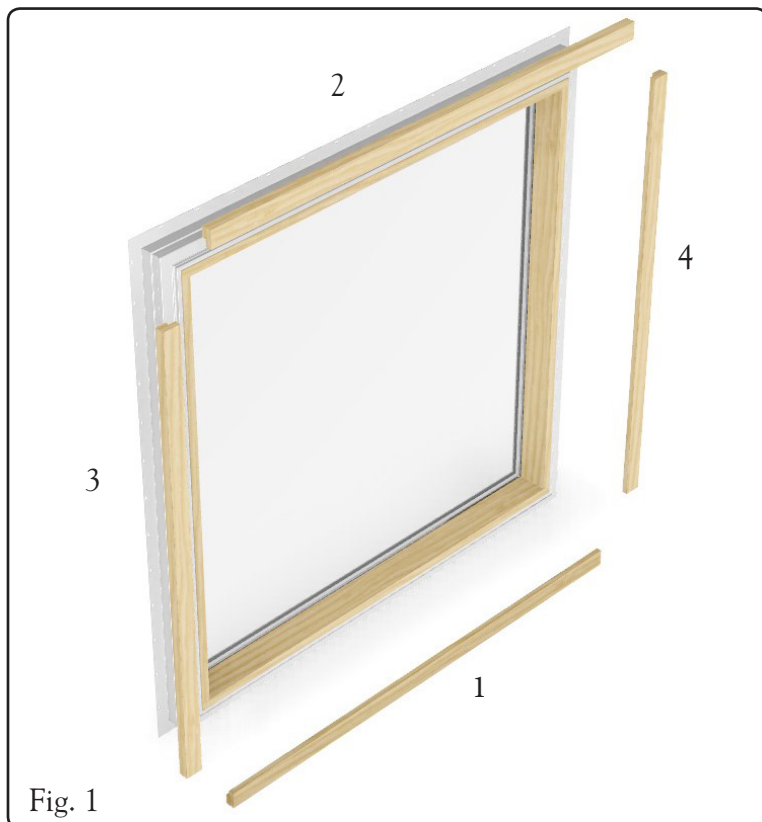
- Safety Glasses
- Staple Gun
- 5/16" x 1" crown staples

INTRODUCTION

These instructions are for applying extension jamb to Forgent[®] windows. Visit www.kolbe-kolbe.com for additional information.

APPLYING JAMBS

See **Fig. 1**. Check the lengths of the wood casing stops by placing them on the window frame. The horizontal casing stops should be $\frac{1}{2}$ " shorter than the frame width or $\frac{1}{4}$ " on each end. This allows clearance for the vertical extension jambs. The verticals should fit between the horizontals.



See Fig. 2 & 3. The casing stop is applied to the interior of the window frame using 4" long receptor clips and crown staples. Place the 4" clips around the perimeter of the frame. The clips should be placed approximately 5" from each corner and then spaced about 18" thereafter. See Fig 2 below to see the orientation of the clips and casing stop for applying them to the window frame. The 4" clips have a catch on the leg that should be facing away from the window.

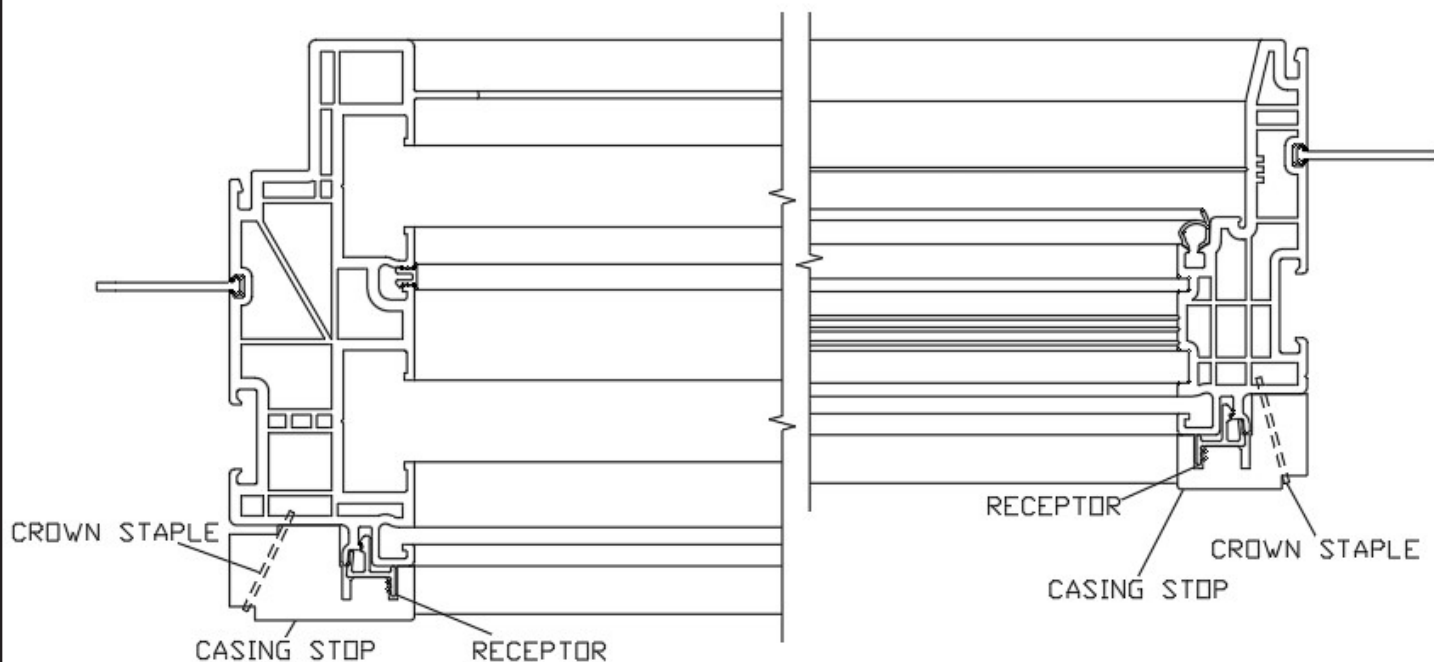


Fig. 2

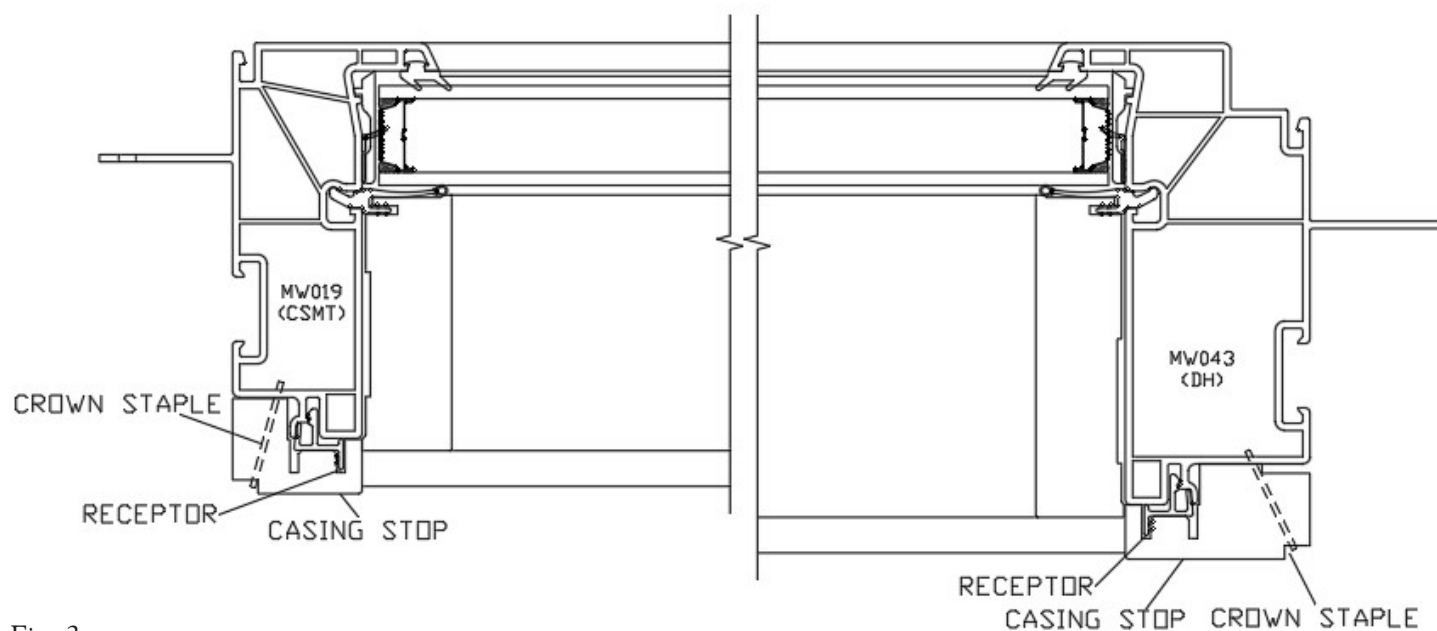


Fig. 3

See Fig. 4 & 5. Press the wood casing stops into the 4" clips to lock the wood stops onto the frame. Then apply one 5/16" x 1" crown staple in each corner of the wood casing stop to prevent the stops from sliding.

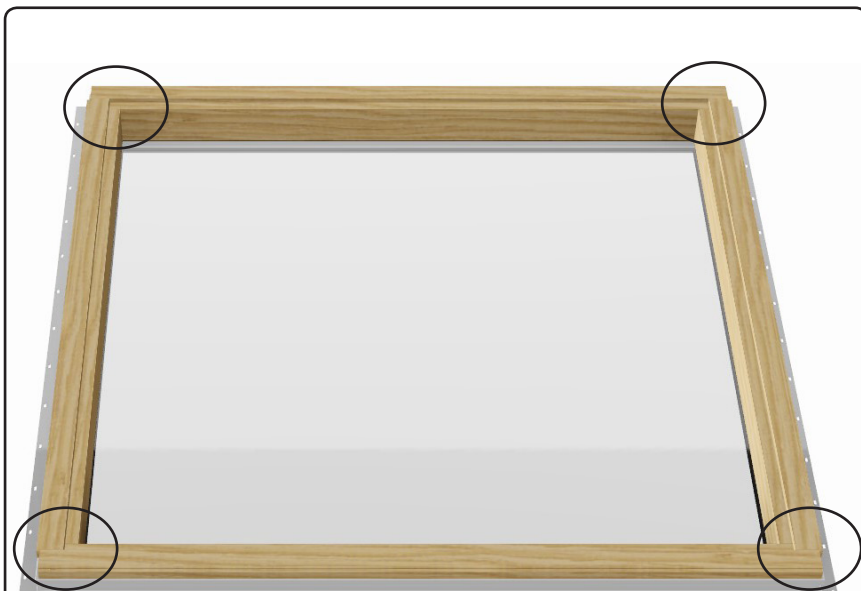


Fig. 4

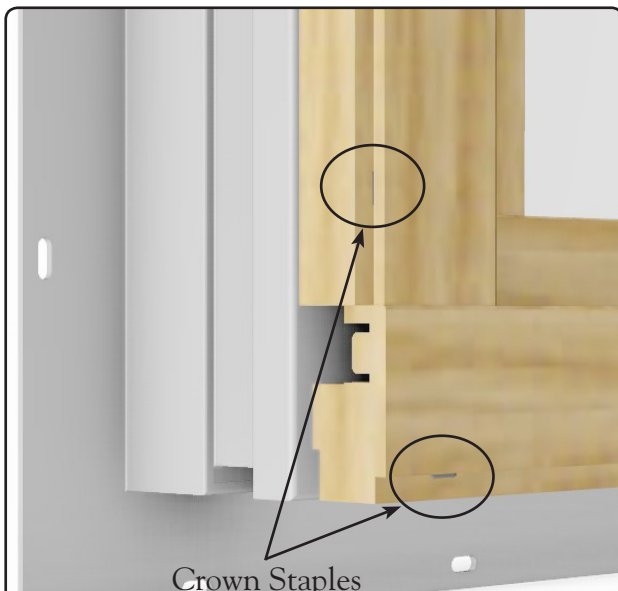


Fig. 5

See Fig. 6 thru 8. Place the jambs on the window. The jamb has a step on one end of the jamb and should pair up with the step on the edge of the casing stop. At each corner of the wood extension jamb staple a 5/16" x 1" crown staple.



Fig. 6



Fig. 7

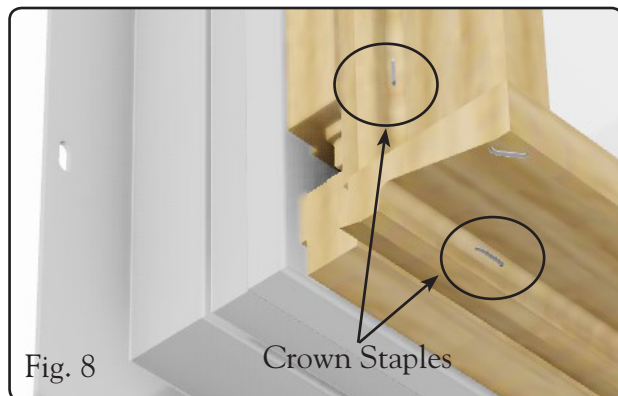


Fig. 8

APPLYING CROWN STAPLES

⚠ CAUTION

DO NOT use staples longer than 1". They will penetrate the extension jambs and be visible from the interior.

See **Fig. 9 & 10**. When installing a crown staple on the Forgent® series jamb a proper staple gun and a flat surface tip is required to install the staples properly. When installing the staples the flat surface of the gun requires to touch the bottom of the jamb, once it touches back of the jamb pull the trigger to complete one cycle. Install crown staple from 6" from corner and 12" to center around the window.

